

Getting Route_Riter to run correctly.

Some users have had problems getting Route_Riter to run correctly, especially if using Windows 7, however the following is applicable to any version of Windows.

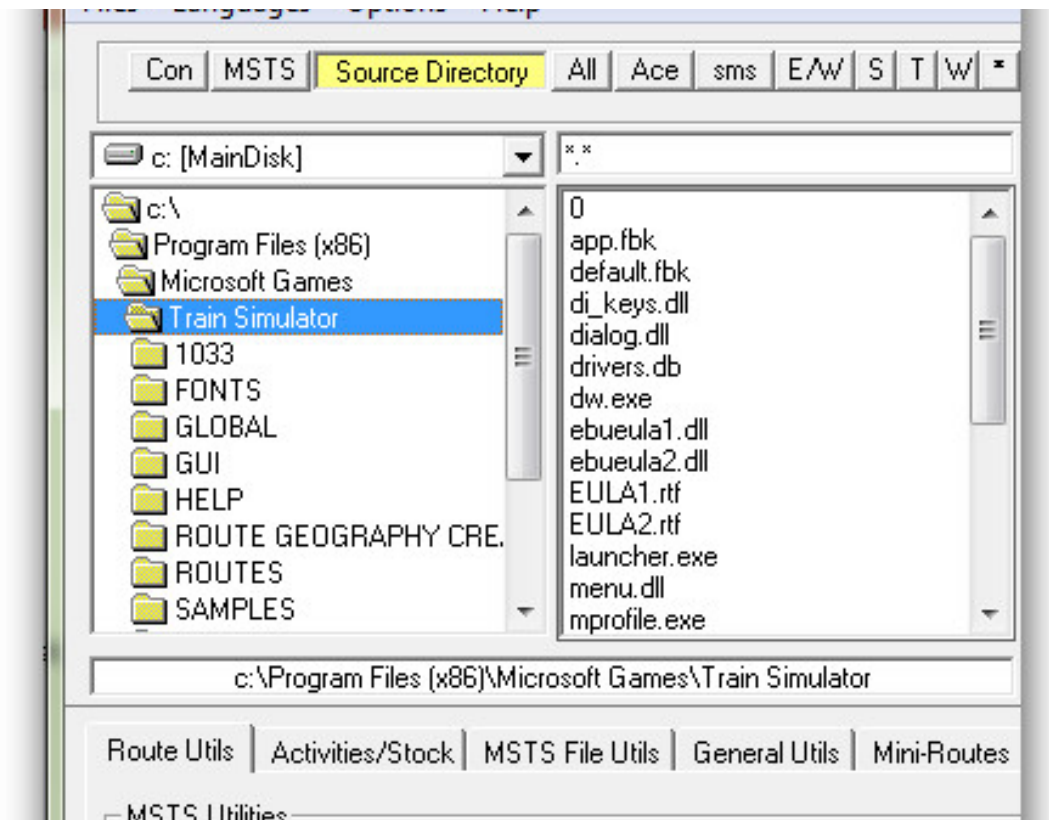
Installing Java

1. The user must download the latest Java version from www.java.com and install it. (If using Windows 7 or Vista, the Java installer must be run as Administrator.)
2. They should then go to the folder `c:\program files\Java\jre6` (or `c:\Program Files (x86)\Java\jre6`)
3. In that folder should be two sub-folders, 'bin' and 'lib'
4. Make a 3rd sub-folder named classes
5. Copy all of the files from the Route_Riter\TsUtil folder into Java\Jre6\classes
6. Run RR and on the TsUtil tab click the 'Show TsUtil Version' button

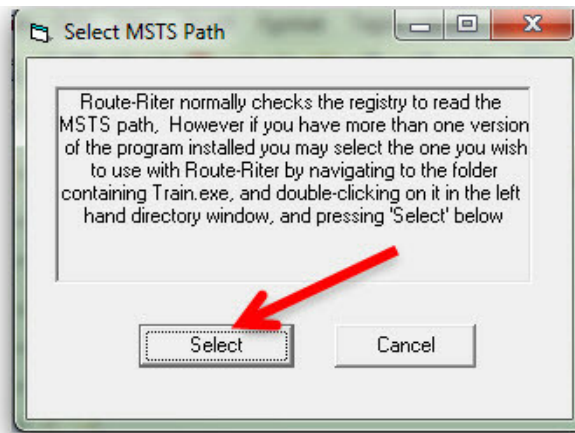
If all is well you should then see a report showing all of the TsUtil files and their version numbers. This indicates that both Java and TsUtil are working correctly.

Setting up the MSTs Path

1. Run Route_Riter and navigate to the TrainSimulator folder in the left hand folder list



2. Double click on 'Train Simulator' and the file list should display the files in the TrainSimulator folder as above.
3. Go to the Files/MSTs Path menu and you should see a box as under:-



4. Click the Select button and you will be taken to the Routes folder.
5. Double click on any route name to select it, e.g. 'Europe 1' and click the Confirm Route button.
6. The MSTS Path and selected Route should now appear in the top window border, e.g.

Path=c:\Program Files (x86)\Microsoft Games\Train Simulator Route=EUROPE1

Running Route Riter

At this point Route_Riter should work correctly, just remembering that if you are using Windows 7 or Vista then, especially if your MSTS is located in the Program Files (x86) folder then Route_Riter must be run as Administrator. (You can do this by right clicking the desktop icon and selecting 'Run as Administrator').

Registry Settings

Users familiar with Regedit may wish to check their Registry settings for both MSTS and Route_Riter these can be found at:-

1. MSTS - HKEY_LOCAL_MACHINE\Software\Microsoft\Microsoft Games\Train Simulator\1.0

This may not appear on Windows 7 64 bit machines, for some reason it does not appear on my PC as above.

2. Route_Riter - HKEY_CURRENT_USER\Software\VB and VBA Program Settings\Route_Riter6

If you can't get Route_Riter running at all, this item may be garbled, so Right-Click on the 'Route_Riter6' entry in the left hand column and select 'Delete' from the drop-down menu. This will remove all Route_Riter entries from the Registry and it will be rewritten next time you run the program.

The above is complete as far as I am aware, please advise me of any errors.

Mike Simpson

<http://www.rstools.info>