

## Setting up QD Consists and Fragments

### Adding Consists to the Quick Drive routes

The most obvious change in TS2015 is the ability to use the new Quick Drive feature where you can choose from a number of Locomotives/Rolling-stock items and drive them between various locations on suitable routes. This is similar to the free roam type of driving in MSTs where you could select any consist for the route and drive it between stations.

Although RSC have included a lot of consists for you to drive, and they have now added a Consist Editor which allows you to add simple Consists, this Consist editor fails if you have a single faulty rolling-stock item in your Assets folder. Furthermore, the Consist editor apparently does not allow you to set up 'Fragments' of consists, so I have added an option to RW\_Tools v6 which allows you to do this reasonably easily.

### Introduction to QD

1. QD scenarios can't easily be added to your own routes, although there is a good tutorial on [uktrainsim.com](http://uktrainsim.com) showing you how to do it, it is pretty complicated.
2. Routes with QD will have a PreLoad folder in the Assets folder, usually something like Assets\RSC\ShermanHill\PreLoad however there are also PreLoad folders in some of the RSC rolling stock packs as well, e.g. Assets\RSC\TornadoPack01\Preload - To add QD Consists using RW\_Tools, you will need to set up your own PreLoad folder AND select it from the RW\_Tools Options menu. If you set up your Developer folder and sub-Folders from the Route Building Tools menu, a PreLoad folder will be set up for you automatically. The folder name will be in the format:-  
  
Assets\Developer name\Product name\PreLoad, e.g. Assets\MikeSimpson\Routes\PreLoad
3. The consist files are named like Black 5 Green.bin and BR Greenx5 Fragment.bin the ones without the word Fragment in the filename are full consists, whereas those with the word Fragment are parts of consists, e.g. in this case 5 Green BR coaches. It is sensible to make up coach sets as Fragments and then make full consists consisting of a loco plus the Fragment, as in this case you don't have to build the full coach set each time you wish to use it. You can also use fragments to set up say a steam loco with its tender, or A and B parts of U.S. Diesel locos.
4. The consist files include a tag(s) which allow you to show which routes the train can be run on, however at this stage this does not seem to be implemented in TS2015 e.g. The Class 377 is set to run on the London-Brighton route, however in Quick Drive it is available for every QD route. I expect that this will be implemented eventually, but have allowed this option in any case.
5. Other options which are available are the years when the locos were operational and the type of consist in question. I don't think these do anything at this time, but they will probably be implemented in TS2015 at a later date.

The following instructions should enable you to add any rolling stock to the QD routes:-

## Setting up a QD Consist

1. You must have set up an Index file which includes at least the rolling stock you intend to use in your QD consist. . If you have already set up a FULL index file, Reports\Index.csv as outlined in the main help file, then this will suffice. However, if not, or to make the Consist Editor easier to use, you can proceed as follows:-

A. Run the RW\_Tools Asset Editor and select a folder containing rolling stock you are going to use in your consist, e.g. RailWorks\Assets\3DTrains\TrainPacks\Diesel\EMD\_F7\ATSF

B. Tick the 'Rolling Stock Only Box' and click 'Add to list'

C. Without clearing the grid, now select other folders containing items you wish to use, e.g. RailWorks\Assets\Kuju\RailsimulatorUS\RailVehicles\Freight\BoxCar , click 'Add to list' and so on until your list includes all the items you are likely to need for your consist building.

D. Click on 'Save List' and use a meaningful name, e.g. ATSF-Stock.csv - this file will be saved in the RW\_Tools\Reports folder.

2. You must have set up your own Preload folder as outlined previously, and selected it from the Options Menu.

3. Now, go to the Scenarios/Build QD consists or fragments menu and the following screen appears:-

The screenshot shows the 'Build Quick Drive consists and fragments' window. The window title is 'Build Quick Drive consists and fragments'. The menu bar includes 'Files', 'Add & Edit Consists', and 'Build Consists'. The window is divided into several sections:

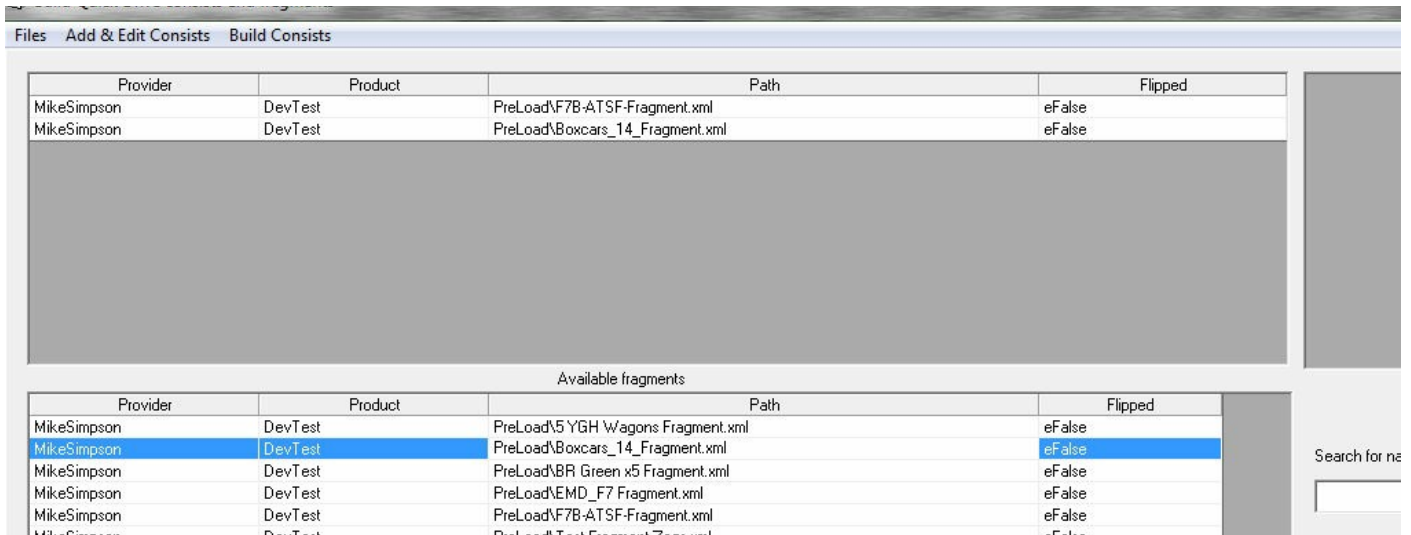
- Available fragments:** A table with columns: Provider, Product, Path, Flipped. It lists four fragments from MikeSimpson.
- Available indexed rolling-stock:** A larger table with columns: Provider, Product, Path, Name, Category, Flipped. It lists 18 items from 3DTrains, including Diesel locomotives.
- Search for name:** A text input field on the right containing 'Black5', with a 'Find Next' button below it.
- Exit:** A button at the bottom right of the window.

4. Go to the Files menu and select the Index file you have set up in D. Above. The top box starts out empty, the middle box displays Fragments you have already built and the bottom box is the index of all your rolling stock. Any column in the bottom box may be sorted by clicking the column title. Column width may be adjusted using the column separators in the title line. There is also a search box for finding rolling stock, e.g. Black5 above.

Double clicking on any item in the Index box or the Fragments box will copy the item into the top box where the consist or fragment is built.

Single clicking on any item in the Index box will display a picture of the item if you have the thumbnail for it in the RW\_Tools\Thumbnails folder, or in the case of locomotives, if there is a thumbnail for it in the Engine\LocoInformation folder.

There are menu options in the Add & Edit Consists Menu to Delete, Flip, Insert After and Insert Multiple Copies of selected stock. E.g. the Insert Multiple Copies will allow you to add 20 container wagons etc with just a couple of clicks.



The picture above shows a consist built from two fragments, consisting of a Diesel loco (A and B sets) plus 14 boxcars.

5. Once you have put together your consist in the top box, go to the Build Consist menu where there are options to:-

Build QD Consist and  
Build QD Fragment

6. Select 'Build QD Consist' and you will be presented with the following screen (Note: if you are building fragments, then all you get is a box to include the fragment name which MUST include the word 'Fragment', e.g. Boxcars\_14\_Fragment

Selecting the Build QD Consist option brings up the following screen:-

Consist name (must be unique)	7FB-ATSF+14Box
Locomotive name (appears in QD select loco screen)	F7A 36' ATSF: 300L-F - Early
Display name (appears in QD select consist screen)	F7A 36' ATSF: 300L-F - Early
Locomotive type (Diesel, Electric or Steam)	Diesel

Locomotive is drivable

Route Name	Folder Name
Hatchet Hill Quarry	363fa1ef-cdc1-468f-b8c6-e5c71b7b8f
Hedborough North	00000007-0000-0000-0000-00000000
Hopetown	000000bd-0000-0000-0000-00000000
Horseshoe Curve	00000025-0000-0000-0000-00000000
Liverpool to Manchester Piccadilly via Warrington Central	00000046-0000-0000-0000-00000000
London Faversham High Speed	00000034-c000-0000-0000-00000000
London to Brighton	00000034-a000-0000-0000-00000000
Marias Pass	00000026-0000-0000-0000-00000000
Munich to Augsburg	00000035-0000-0000-0000-00000000

Era (start year - end year)    1950    1980

Consist type    Consist Type Freight Scrap

OK    Cancel

7 Fill in the boxes - The top box need a unique name for your consist.

8. The Locomotive name which appears in the QD screen. Often you will just see a silhouette of the loco type, but sometimes a colour picture appears depending upon whether you are using a name which RSC has already used. This should be the same name as your loco has in the TS2015 scenario editor screen.

9. This is the display name for the Select Consist screen, e.g. Black 5 + 6 Mk1s

10. Select loco type from this drop down list - if you select Electric, then tick boxes for items such as Needs Pantograph, Needs 3<sup>rd</sup> rail, etc appear.

11. You can select the route the consist will appear on (must be a QD route, but TS2015 does not appear to use this data at this time, as most consists appear for all routes). You can select multiple routes using Ctrl-click to highlight all the routes you need.

12. For era, you can select for example 1940 - 1964 for a steam loco, I don't think this does much either?

13. Finally this drop down list gives the Consist types from the Blueprint Editor - it is somewhat incomplete, but as with some other options, does not seem to do anything at this time. As/when RSC improve upon this list I will upgrade RW\_Tools.

14. Click OK and you will be told the Consist or Fragment has been added to your PreLoad folder and it should appear in your QD list in TS2015. You do NOT have to add your Provider/Product names to the route for this to work.

And here is the above consist of U.S stock appearing on the 3<sup>rd</sup> party Wycombe Railway, just to show that your own QD consists will work on any line with QD already set up:-



Please advise of any errors etc.

Mike Simpson

Rwtools at live dot com dot au

29<sup>th</sup> Nov 2014